

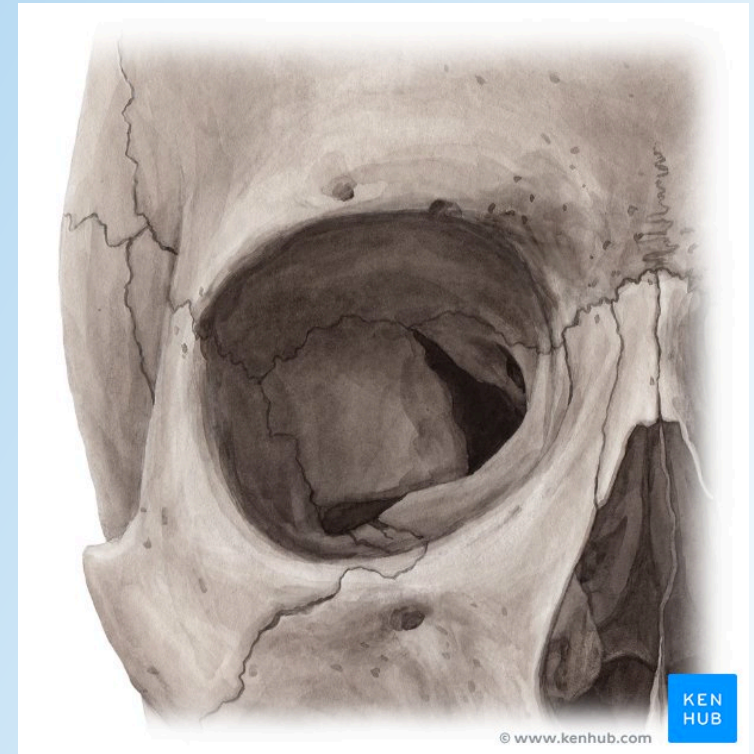
# The Bony Orbit + Eye

# What is the orbit?

“Eye socket”

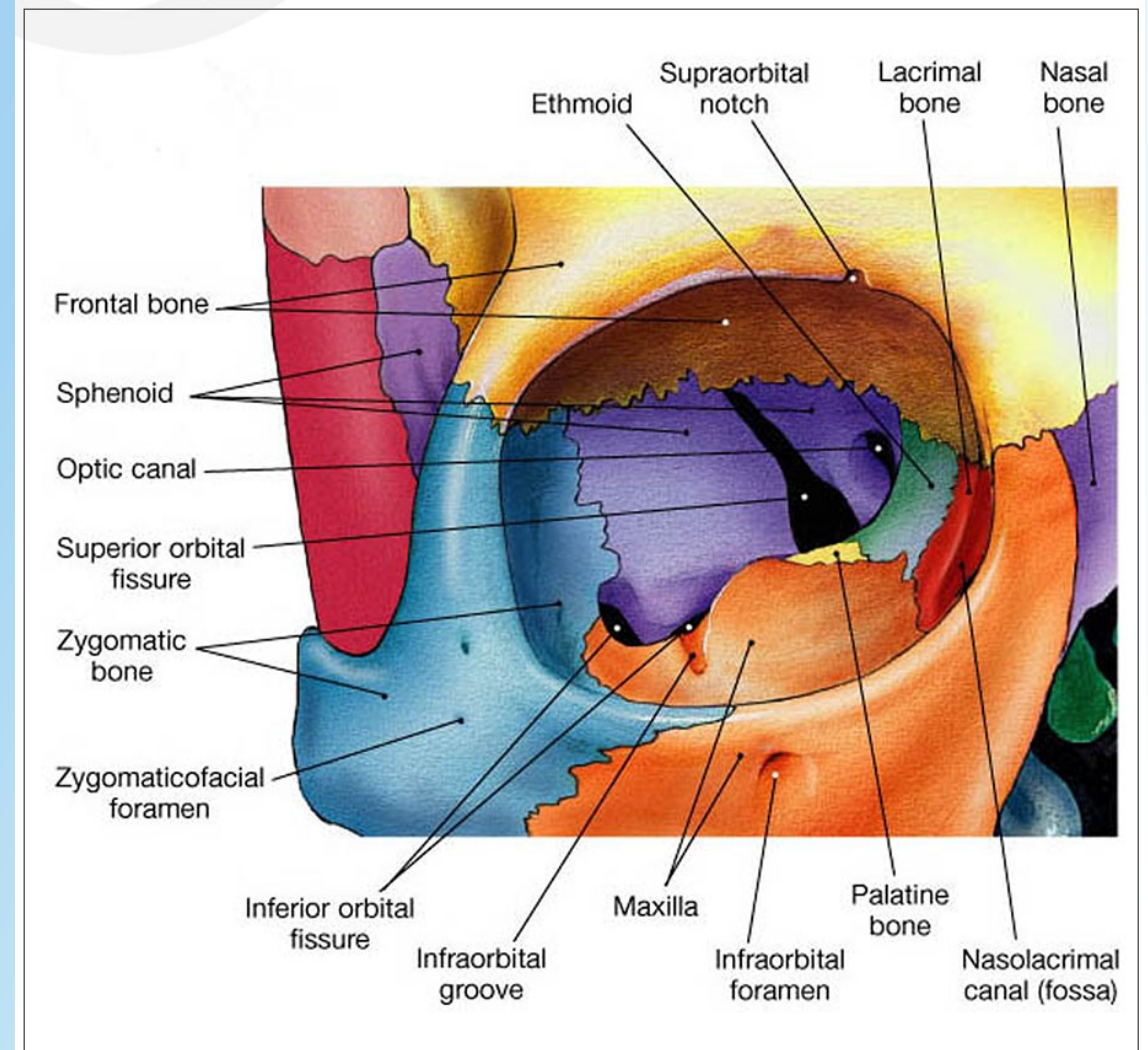
Margins are composed of:

- Frontal b.
- Maxillary b.
- Zygomatic b.

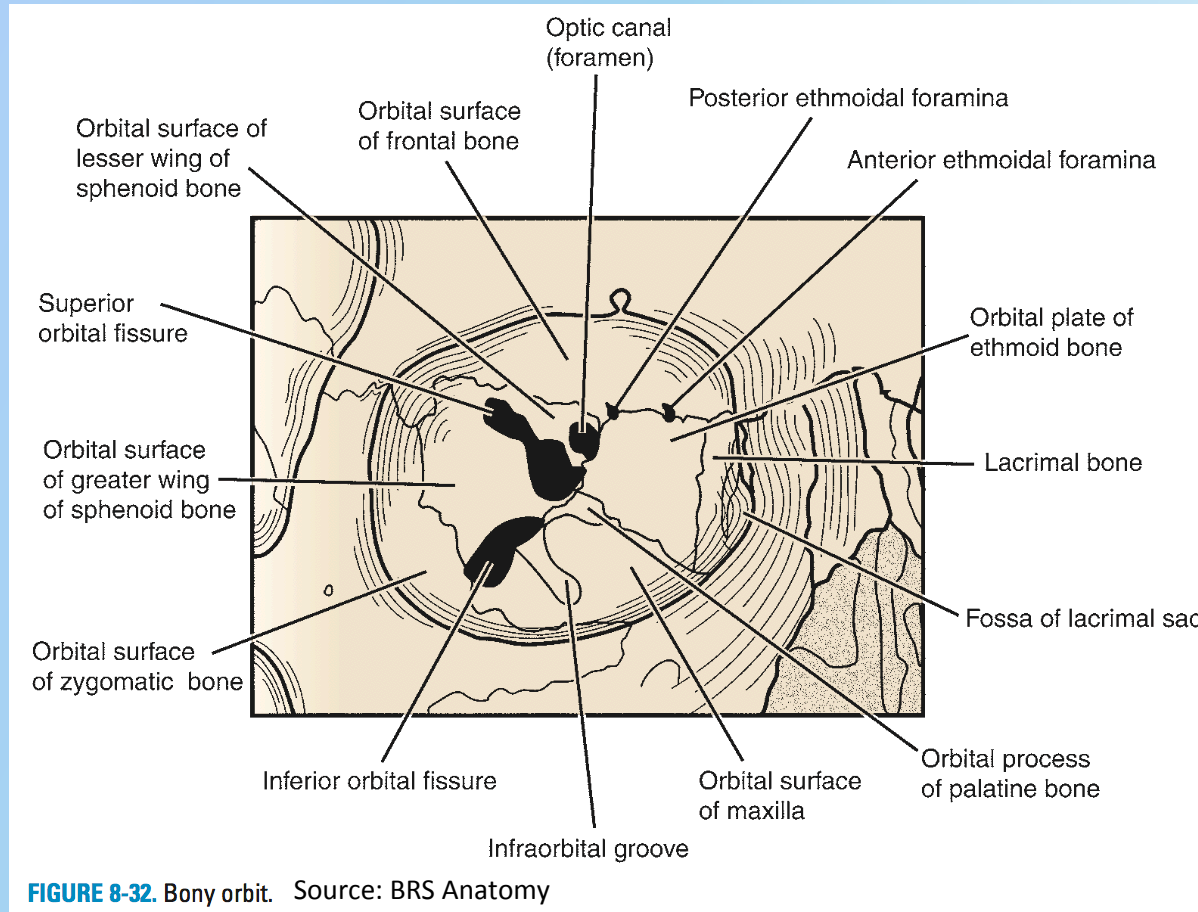


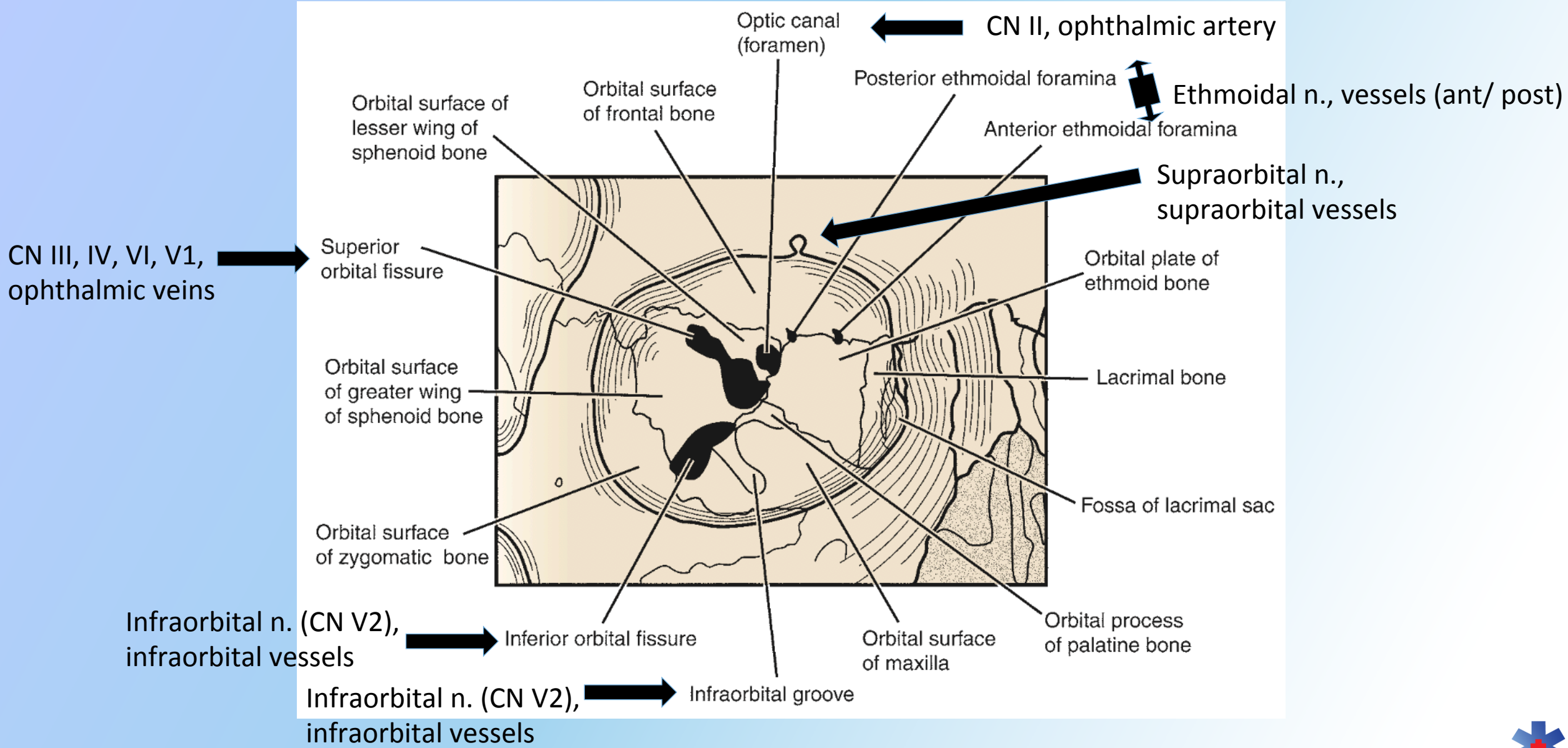
# Walls of the orbit

- Superior (roof):
  - Frontal b.
  - Sphenoid b. (lesser wing)
- Lateral:
  - Zygomatic b. (frontal process)
  - Sphenoid b. (greater wing)
- Inferior (floor):
  - Maxilla (orbital surface)
  - Zygomatic b.
  - Palatine b.
- Medial:
  - Ethmoid b. (orbital plate)
  - Frontal b.
  - Lacrimal b.
  - Sphenoid b. (body)



# Fissures, canals, and foramina





# Nerves

- Ophthalmic nerve (CNV1)
  - Nasociliary
  - Frontal
  - Lacrimal
- Optic nerve (CN2)
- Oculomotor (CN3)
- Trochlear (CN4)
- Abducens (CN6)
- Ciliary ganglion



# Vessels

## Ophthalmic Artery

- Branches from ICA then enters orbit through optic canal
1. **Central artery of the retina**
  2. Long/ short posterior ciliary arteries
  3. Lacrimal artery
  4. Medial palpebral arteries
  5. Muscular branches
  6. Supraorbital artery
  7. Ant/ post ethmoidal arteries
  8. Supratrochlear artery
  9. Dorsal nasal artery

## Ophthalmic Veins

1. Superior ophthalmic vein
2. Inferior ophthalmic vein

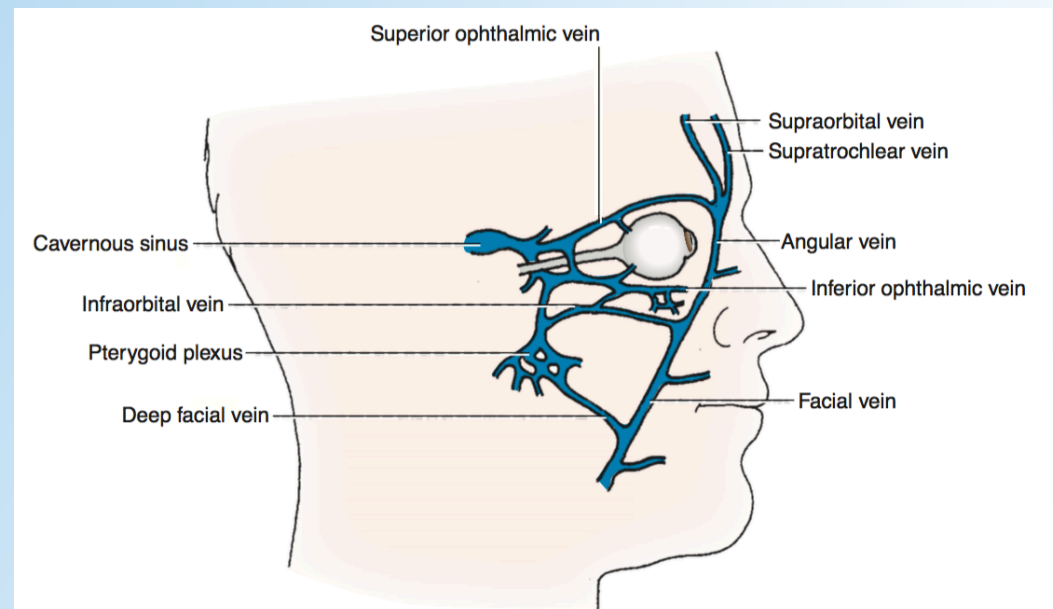
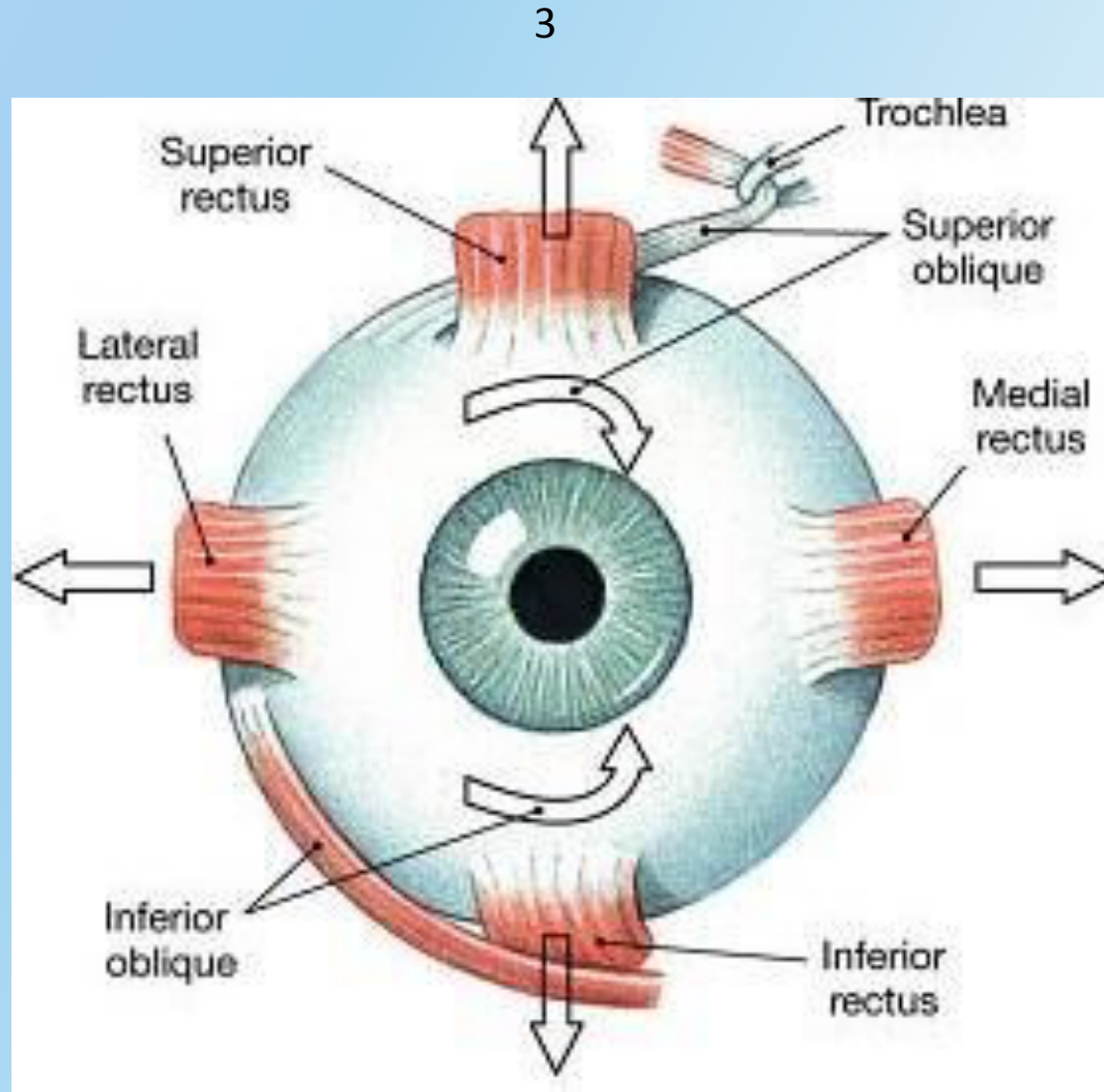


FIGURE 8.33. Ophthalmic veins. Source: BRS Anatomy

# Muscles

- $LR_6SO_4R_3$



4

6

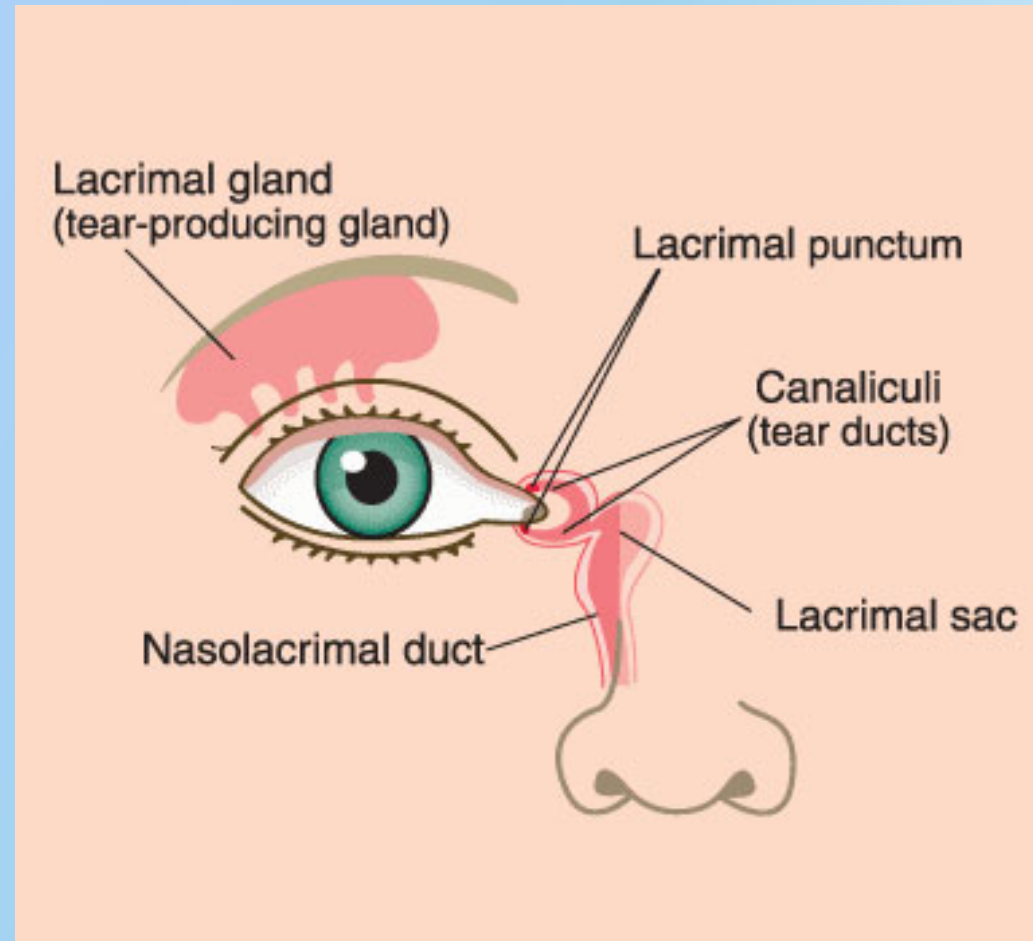
3

3

3



# Lacrimal Apparatus



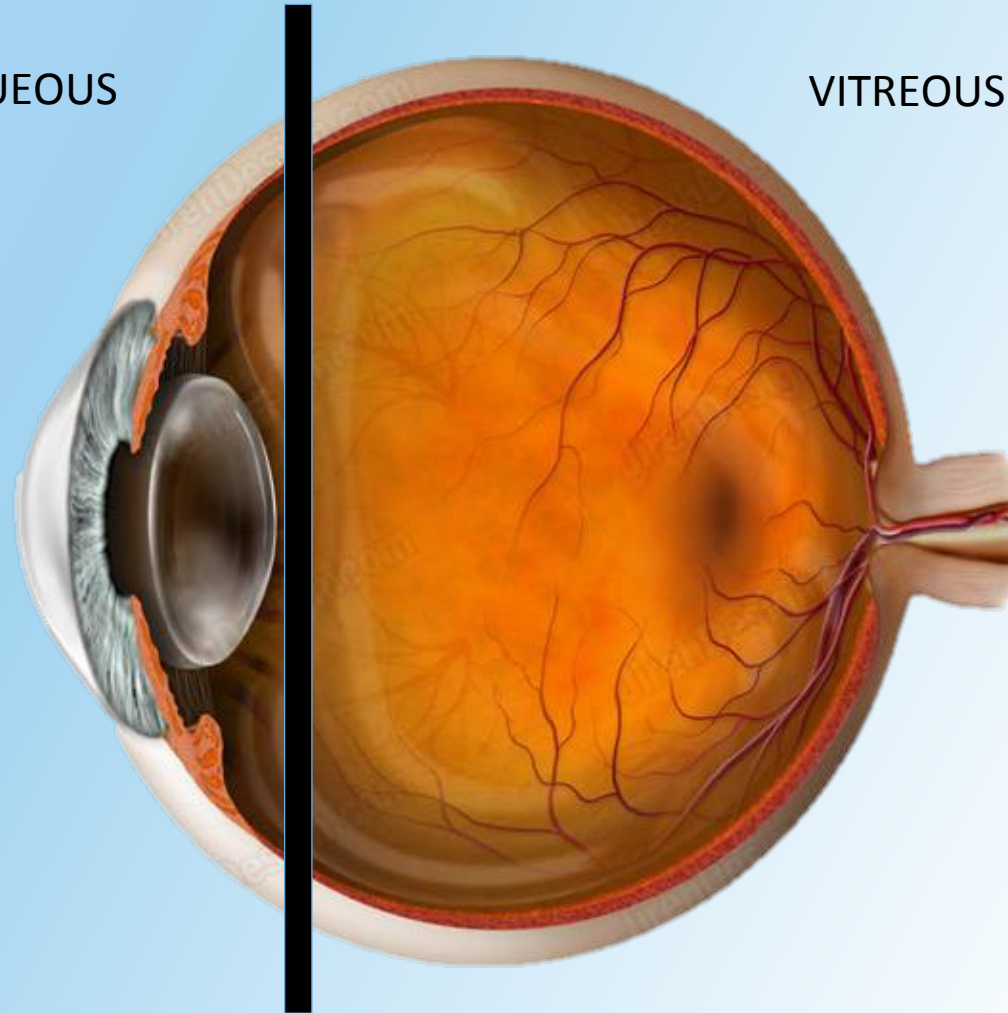
# Eyeball

CIPLR:

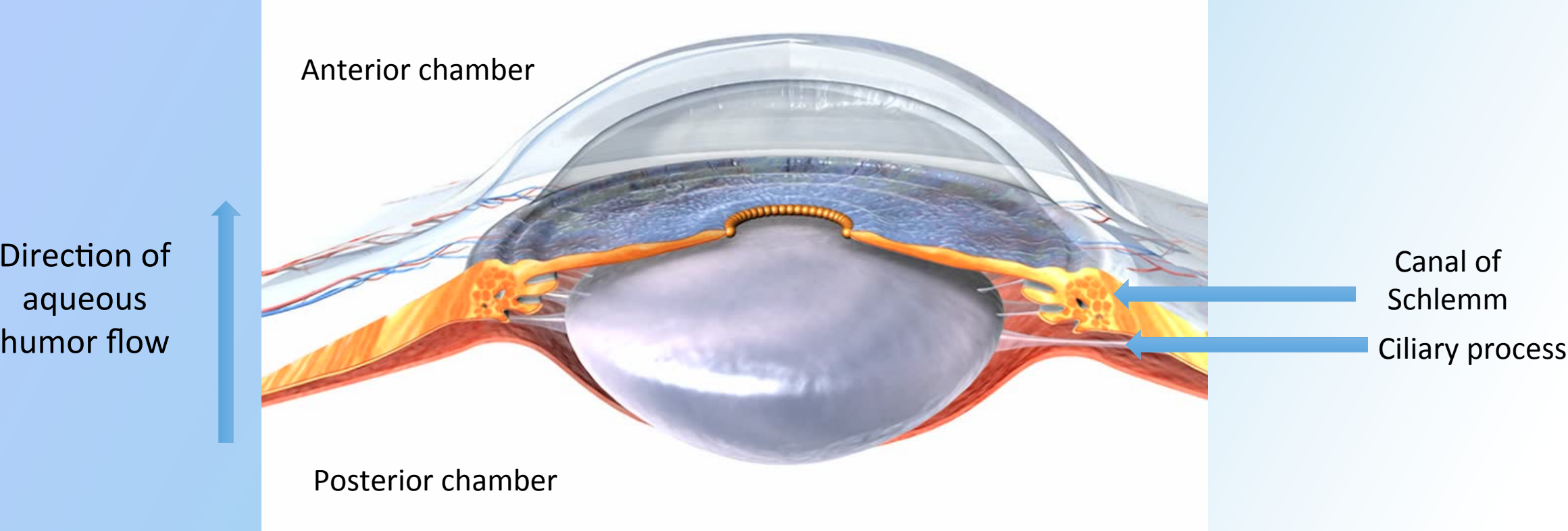
- Cornea (/ sclera)
- Iris
- Pupil
- Lens
- Retina

AQUEOUS

VITREOUS



# Anterior Segment



Thanks for your attention!